

ALOHA POINT OF SALE CONFIGURATION APPENDIX
Version 1.0

Section 1: Set Up SmartReceipt On The Terminal

1. From the server, click on **UltraVNC Viewer** (sometimes called Real VNC Viewer).
2. Type the IP Address of the terminal to connect to.
3. Click **Connect**.
4. Enter the password to log in.
5. Prior to installing SmartReceipt, ensure receipts are printing on the terminal.
6. Download and install SmartReceipt following the installation instructions provided*

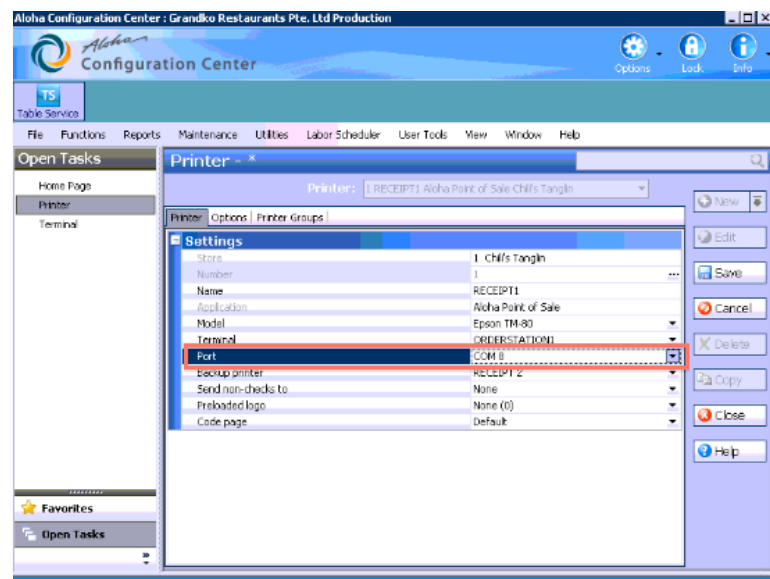
* Because Aloha only has up to 10 COM ports in use, the SmartReceipt terminal will need to be set to something other than COM 20. In most cases, COM 8 is used. Under Serial Options, flow control may need to be set to 'xonxoff' and parity may need to be set to 'even' (depending on the printer diagnostic sheet).

Section 2: Configure Ports For SmartReceipt

1. From the server, click on **Aloha Manager***.

*This can also be found in C://Aloha/QS/Bin

2. Click **Admin > Login** and enter username and password.
3. Click on **Maintenance > Hardware > Printers** at the top of the page.
4. From the drop down at the top of the page, select the printer associated with the desired terminal.
5. Select the SmartReceipt COM Port* from the drop down.



6. Click **Save**.
7. Click **Utilities > POS > Refresh Data***.

*The Changes will only take place once 'Refresh Data' is clicked. The Refresh Data command will restart the POS application on all terminals as soon as it is clicked. It is highly recommended that this is coordinated with someone on site so that it is safe to do (i.e. break in the customers).

Section 3: Set Up Printing To A Network Printer*

*This section is not required unless you know in advance that you are printing to a Network printer.

1. From the server, click on **Aloha Manager***.

*This can also be found in C://Aloha/QS/Bin

2. Click **Admin > Login** and enter username and password.
3. Click on **Maintenance > Hardware > Printers** at the top of the page.
4. Select '**Windows Printing**' as the Port.
5. Click **Utilities > POS > Refresh Data**.